



三江学院

2017-2018







---

1.1

1.2



1.5

1-3 2018

	4779			1481	829	652	1481
				2738	1449	1289	2738
				560	405	155	560
		-		4779	2683	2096	4779
		311		311	311	-	311
	3+4	111	3+4	111	111	-	111
		5201	-	5201	3105	2096	5201
	630			230	230	-	241
				340	340	-	348
				30	30	-	30
				30	30	-	33
		400		400	400	-	447
		1030	-	1030	1030	-	1099
	-	6231	-	6231	-	2096	<b>6300</b>

			2018			
1	32 (1911)		100	260/200	484	24
2			280	225/170	450	55
3			25	185/145	166	21
4			829	281	304	23
5			1449	285	303	18
6	33 (3280)		25	449	518	69
7			55	490	515	25
9	34 2120		10	316/178	709	215
10			30	316/190	668	162
11			38	486	520	34
12			62	432	465	33
13	35 6463		15	290/195	586	101
14			5	290/195	612	127
15			20	446	483	37
16			30	378	405	27
17	36 2335		19	496	526	30
18			42	447	471	24
19	37 B122		5	328	484	156
20			9	505	519	14
21			17	435	459	24



			2018			
22	41 (7610)		30	326/190	519	3
23			10	324/160	495	11
24			58	436	485	49
25			162	374	413	39
26	44 (11122)		71	443	497	54
27			115	376	412	36
28	45 (B122)		63	403	419	16
29			117	345	338	-7
30	50 (3297)		8	434	479	45
31			15	428	438	10
32	51 (3237)		104	492	510	18
33			190	458	469	11
34	52 (1749)		78	477	481	4
35			148	379	382	3
36	53 (32C1)		62	490	494	4
37			116	430	410	-20
38	54		19	278	269	-9
39	62 (0842)		41	380	431	51
40			79	370	403	33
41	65		30	341	368	27
42	14 3110		5	236/70	354	48
43			20	236/203	489	50
44			62	363	447	84
45			111	323	372	49

---

				<b>1</b>	
1			20	88	440.00%
2			36	150	417.00%
3			37	108	292.00%
4			37	106	286.00%
5			48	132	275.00%
6			44	106	241.00%
7			73	147	201.00%
8			41	80	195.00%
9			19	35	184.00%
10			14	23	164.00%

	4779	4779	4427	352	92.63%
	311	311	309	2	99.36%
3+4	111	111	109	2	98.20%
	630	652	622	30	95.40%
	400	447	442	5	98.88%
	<b>6231</b>	<b>6300</b>	<b>5909</b>	<b>391</b>	<b>93.79%</b>

---

## 2.1

2016

136

--	--	--	--	--

---

1	80204		270	4	2	54.00
2	80207		235	5	2	39.17
3	80601		1311	21	27	38.00
4	20401		983	17	19	37.09
5	80203		215	6		35.83
6	50301		614	11	13	35.09
7	50303		789	12	23	33.57
8	80202		1217	16	41	33.34
9	120204		2350	28	85	33.33
10	80902		1101	19	29	32.87
11	130508		131	3	2	32.75
12	81004		178	5	1	32.36
13	80208		402	8	9	32.16
14	120903		108	3	1	30.86
15	120210		208	5	4	29.71
16	120105		267	6	6	29.67
17	130503		413	7	16	27.53
18	120901K		866	13	38	27.06
19	120103		419	8	15	27.03
20	81001		1308	23	51	26.97
21	80703		256	7	6	25.6
22	80903		230	6	7	24.21
23	120802T		192	6	4	24
24	50103		138	3	6	23
25	120202		766	14	40	22.53
26	80901		641	13	31	22.49

27	20303		88	3	2	22
28	80801		313	7	15	21.59
29	20304		421	14	12	21.05
30	82801		638	16	29	20.92
31	130310		336	6	21	20.36
32	120601		191	6	7	20.11
33	130502		316	7	18	19.75
34	120203K		112	4	4	18.67
35	130404		157	4	9	18.47
36	130305		305	9	16	17.94
37	080803T		65	3	2	16.25
38	82803		240	8	16	15
39	80701		326	14	16	14.82
40	50207		371	14	31	12.58
41	50101		341	13	30	12.18
42	80704		120	7	7	11.43
43	80702		104	9	2	10.4
44	50201		727	56	30	10.24
45	130301		90	2	14	10
46	130402		111	5	19	7.66
47	030102T		55	6	3	7.33

---











---


2.4

2-6

		1030.4
	/	32.24
		207499.44
	/	9.74
		143721.87
	/	6.75

---

2.5

2.6

2.7

---

---

3.1

---

3.2






---

						(%)

---

						(%)

			%

					(%)



					(%)

		30	31-60	61-90	90







---

				%

**1**

**2**



3.3

3-9 2017-2018

				<b>ISBN</b>
002100				9787121144059
001482				978-7-5641- 7246-6
001424		POCIB		978-7-510- 31991-4
001734				978-7-301- 28534-3
001558		SQL		9787563549962
001025				978-7-5630- 2508-4
001861				9787111570387

---

### 3.4

3-10

				<b>&amp;</b>
2016-2017		4	37	107
		20	70	
2017-2018		10	71	164
		27	93	

---

---

---

4.1



---


---

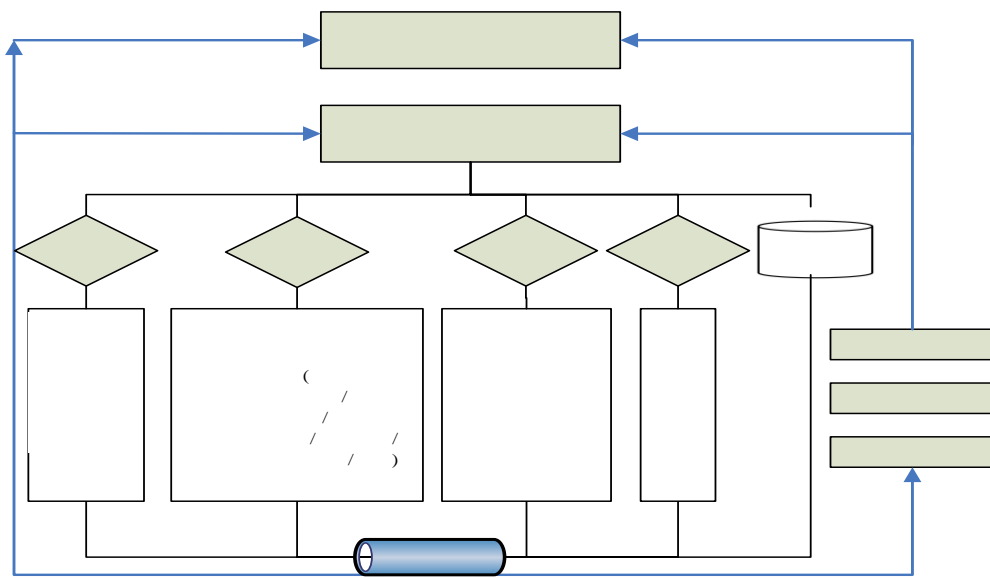



---

.5.1

---

5.3



5-1

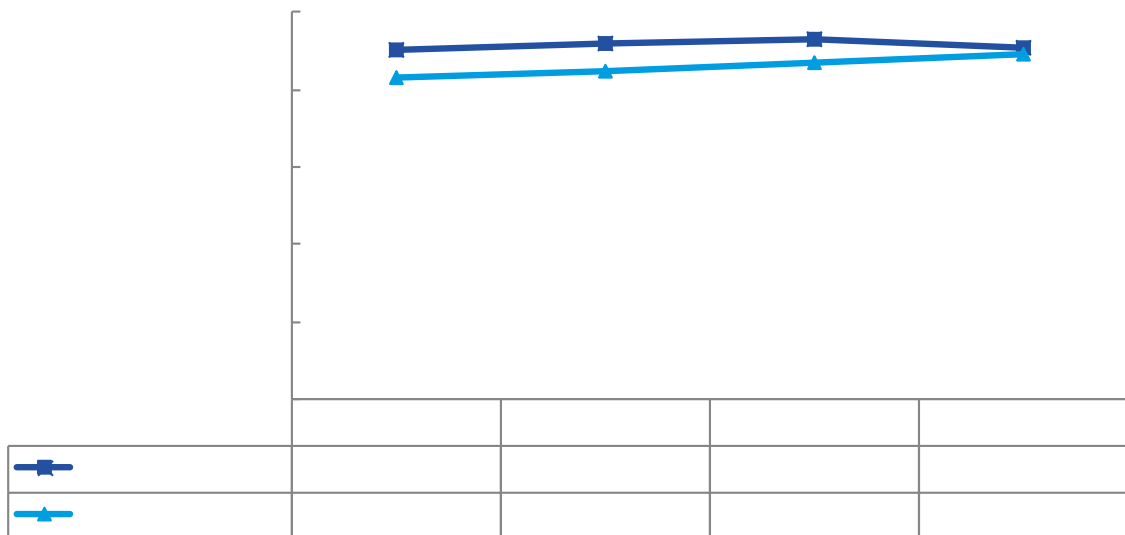
5.4

---

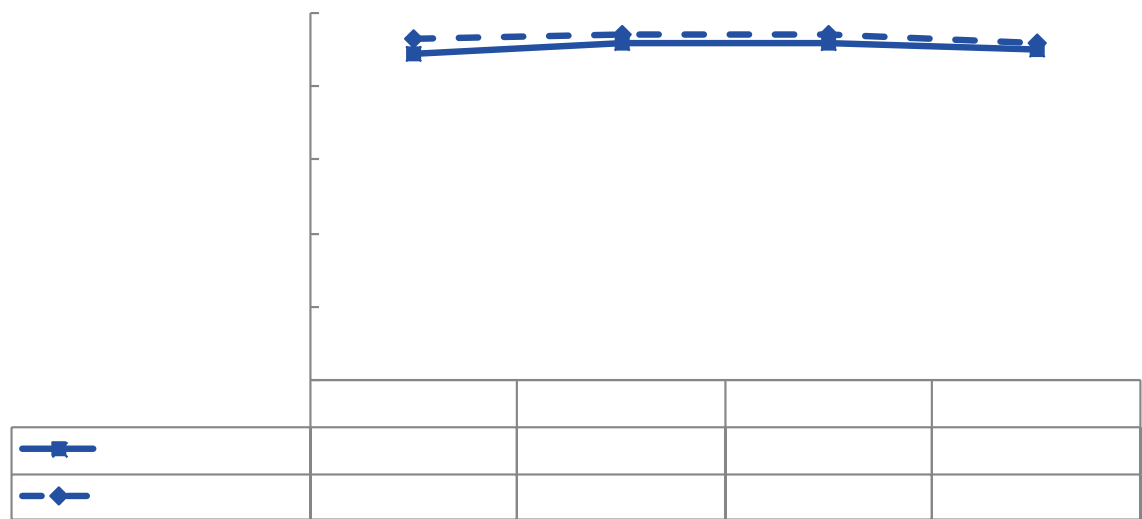


---

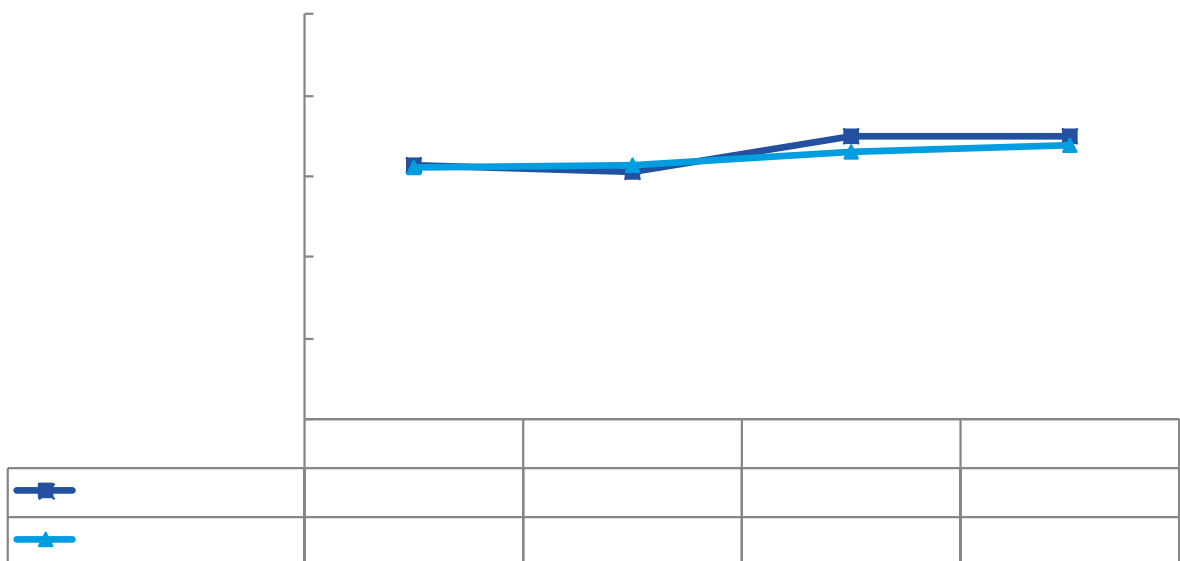
6.1



89% 92% 92% 90%  
93% 94% 94% 92%



63% 61% 70% 70%



6.2

---

			%		%
1		37	97.37	36	97.3
2		152	95	143	94.08
3		115	97.46	109	94.78
4		104	98.11	102	98.08
5		47	97.92	44	

---

			%		%
--	--	--	---	--	---






6.4

6.5

101A		165	154	93.33%
102A		146	61	41.78%
102B		79	33	41.77%
102F		65	43	66.15%

102K		29	11	37.93%
104A		976	895	91.70%
104B		250	235	94.00%
105A		155	147	94.84%
105B		186	182	97.85%
105C		57	52	91.23%
106B		135	76	56.30%
106C		66	31	46.97%
107A		333	318	95.50%
107B		108	102	94.44%
107D		50	44	88.00%
108A		374	348	93.05%
108B		152	152	100.00%
109A		30	25	83.33%
109B		115	113	98.26%
109C		85	76	89.41%
109N		40	35	87.50%
110A		225	206	91.56%
111A		90	86	95.56%
112A		178	171	96.07%
112B		53	50	94.34%
113B		22	19	86.36%
113P		119	114	95.80%
113Q		104	102	98.08%
113R		135	127	94.07%
113S		42	41	97.62%
113T		37	37	100.00%
114D		19	12	63.16%

115D		287	265	92.33%
115G		66	62	93.94%
115I		47	46	97.87%
115J		161	140	86.96%
118A		287	277	96.52%
118C		119	113	94.96%
		5587	5001	89.51%

6.6

6.7

	<b>2018</b>	
		%



---

7.1

7.2

---

7.3

200

30

4

2

4GLTE

---

3+1

7.4



---

---

8.1





---